

Lodgement of State Significant Development Application

Health Infrastructure lodged the State Significant Development (SSD) application for the \$250 million Griffith Base Hospital Redevelopment in late April 2021.

This important milestone brings the new Clinical Services Building one step closer to delivering expanded health services for Griffith and the surrounding communities. Lodgement of the planning application represents over two years of detailed planning and extensive consultation with clinicians, operational staff, community members and local and state government agencies.

The SSD application is on public display with the Department of Planning, Industry and Environment. During the 28-day public exhibition period the community has the opportunity to review the design documentation prepared to date for the new hospital and to make submissions in response to the proposal. *Continued, page 2.*



Above: an Artist's impression of the Griffith Base Hospital site at completion



Above: an Artist's impression of the front entrance of the new Griffith Base Hospital at completion

Continued from page 1

The new Griffith Base Hospital will deliver all key clinical services in a purpose designed building to support contemporary models of care.

The hospital will provide the Griffith region with capacity for an expanded emergency department; significant increase in aged care and rehabilitation beds; operating theatres, surgical, and medical inpatient units; as well as maternity, medical imaging and paediatrics; expanded outpatient services with more specialist clinics, renal and oncology services.

An enclosed clinical linkway will provide access between the adjoining private hospital. The works also include the demolition of remaining redundant buildings, new car parking and extensive landscaping of the health campus.

Construction of the new hospital will support job opportunities, as well as apprenticeships and increased economic activity to the region. While employment opportunities at the completed hospital is expected to attract healthcare professionals to the region.

The new Griffith Base Hospital is forecast to be completed by 2025.

The SSD application is available to view on the Department of Planning, Industry and Environment's major projects website at:

planningportal.nsw.gov.au/major-projects



Early and enabling works: progress in pictures

It's been a busy few months as the early works phase of the Redevelopment project continues at work sites across the Hospital campus. The completion of these works ensures the continued operation of the health service while the new hospital is built.

Included in these works is the construction of a temporary paediatric unit and new non clinical services building with a temporary linkway to the existing Hospital. A temporary carpark at the front of the Hospital; this is also under construction and expected to open in mid-May.

There will be no disruption to health services during these works. Please observe signage when visiting the campus as there may be changes to access roads and building access points in some parts of the hospital grounds.

The early works are forecast for completion in early 2022 ahead of main works commencing.



Above: Construction of the non clinical services building and associated works is on-track with internal and external steel wall framing underway as well as the installation of building services including electrical, water, fire and air-conditioning.

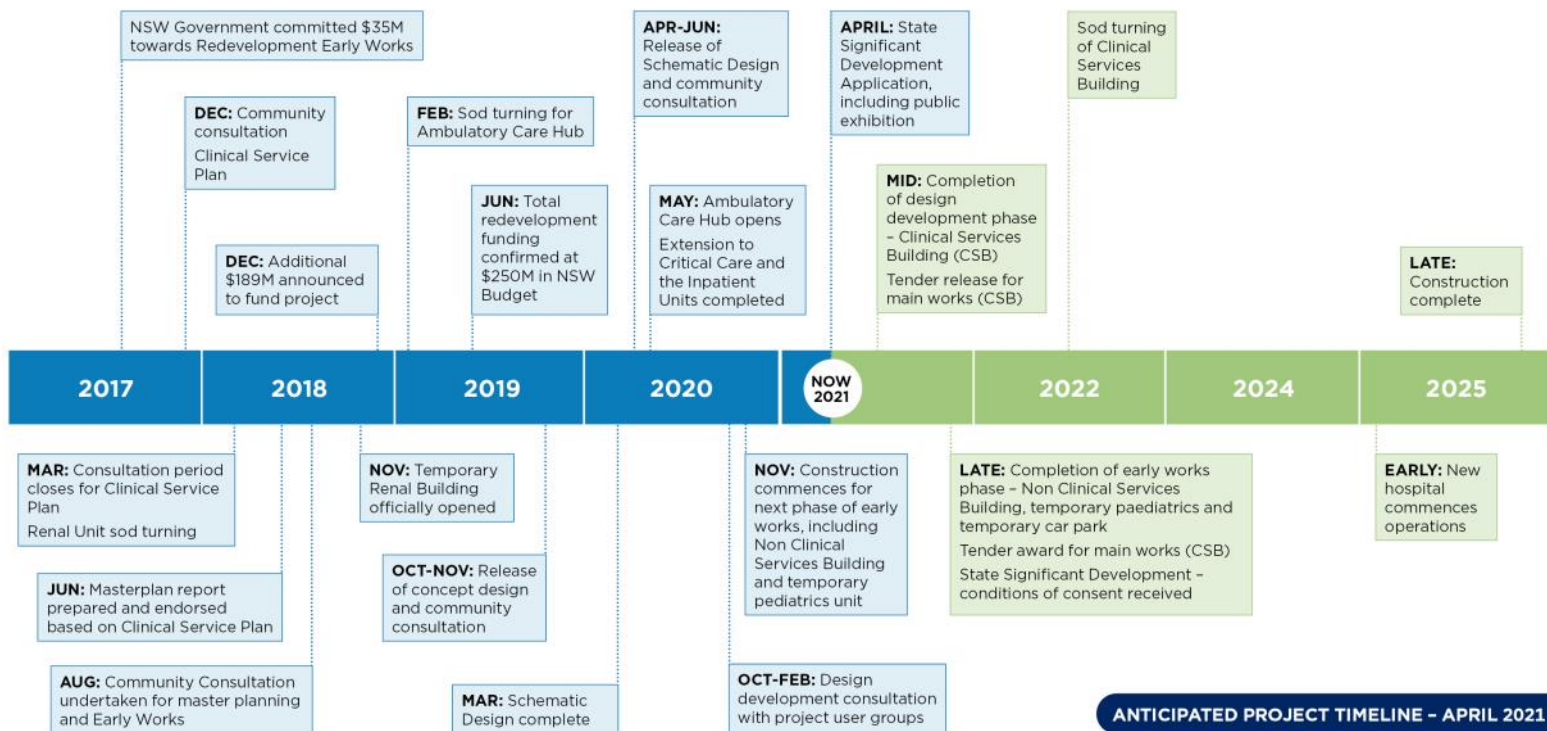


Pictured (above): The concrete slab of the temporary Paediatric Unit was poured in late April (right) installation of new stormwater and sewer services along Warrambool St is nearing completion.

Watch a short video explaining the early and enabling works here:

mldh.health.nsw.gov.au/GBHRedev

Project Timeline



Temporary car park nearing completion

New non clinical services building under construction

Temporary paediatric unit under construction

Above: An aerial view of the Griffith Base Hospital campus taken in late April 2021 showing the temporary car park at the front of the hospital, the temporary paediatric unit and new non clinical services building work zones.